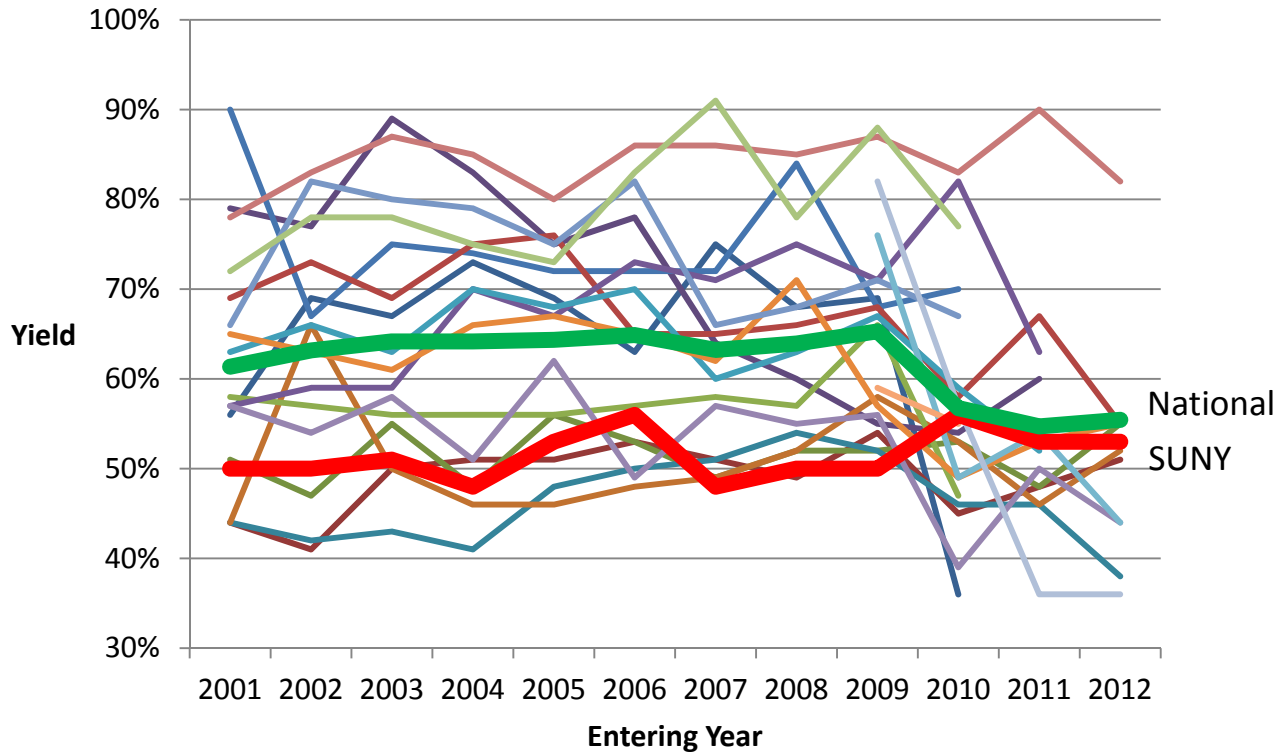


Yield by School per Year*



	2001	2002	2003	2004	2005	2006	2007	2008	2009	2010	2011	2012
SUNY	50%	50%	51%	48%	53%	56%	48%	50%	50%	56%	53%	53%
National	61%	63%	64%	64%	64%	65%	63%	64%	65%	57%	55%	55%

*Each thin colored line represents a school or college of optometry.

10.18.12