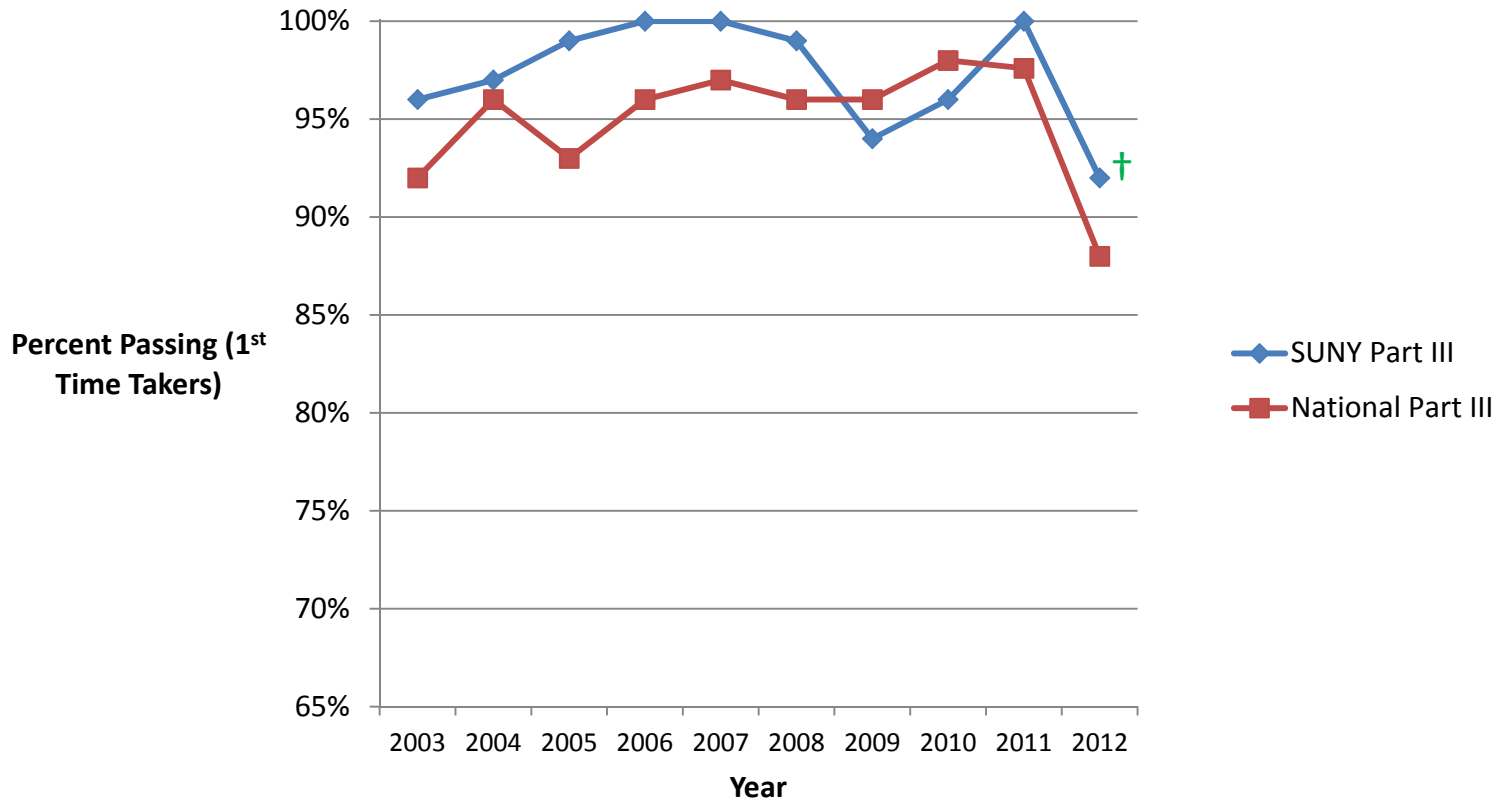


### NBEO Part III (Clinical Skills)\*



	2003	2004	2005	2006	2007	2008	2009	2010	2011	2012 <sup>†</sup>
<b>SUNY Part III</b>	96%	97%	99%	100%	100%	99%	94%	96%	100%	92%
<b>National Part III</b>	92%	96%	93%	96%	97%	96%	96%	98%	98%	88%

\*Through 2009, Part III was named “Patient Care.” In 2010 it was restructured and renamed “Clinical Skills.”

<sup>†</sup> In 2012, for the first time, all candidates were required to take Part III at the NBEO national headquarters in Charlotte, NC.