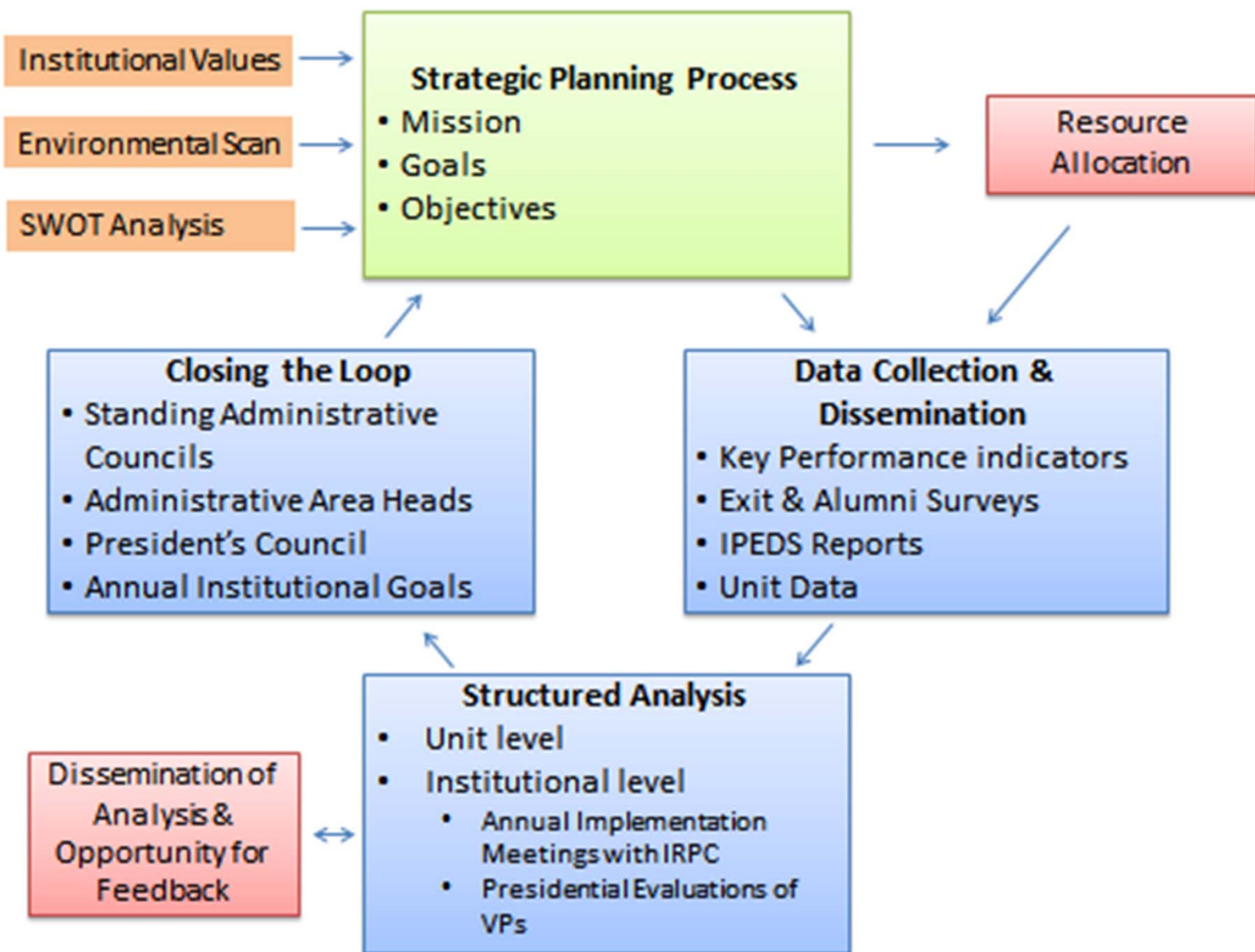


Academic Affairs Assessment Plan

December, 2013



STATE UNIVERSITY OF NEW YORK
COLLEGE OF OPTOMETRY



LEADERSHIP EXCELLENCE INNOVATION INQUIRY
SERVICE PROFESSIONALISM COMMUNITY DIVERSITY
INNOVATION LEADERSHIP EXCELLENCE INQUIRY
COMMUNITY SERVICE PROFESSIONALISM DIVERSITY
INQUIRY INNOVATION LEADERSHIP EXCELLENCE
DIVERSITY COMMUNITY SERVICE PROFESSIONALISM
EXCELLENCE LEADERSHIP INNOVATION

2013-2018 STRATEGIC PLAN

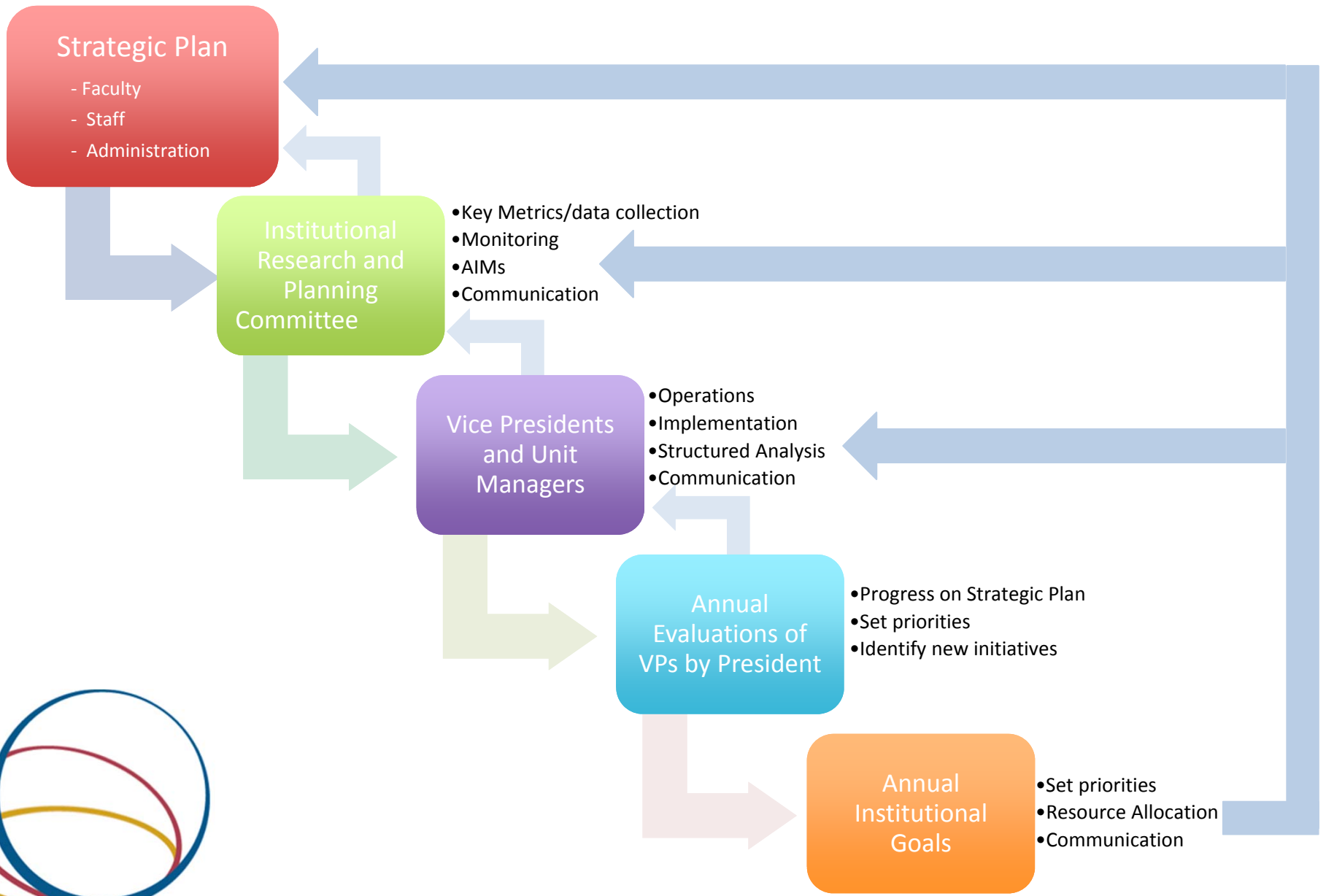


STATE UNIVERSITY OF NEW YORK
COLLEGE OF OPTOMETRY

OFFICE OF THE PRESIDENT

MEMORANDUM
Institutional Goals
-2013/2014-

SUNY Optometry – Institutional Assessment



Categories of Key Performance Indicators for Academic Affairs

- Faculty Demographics
- Library Statistics
- Research Activity
- Education Programs

Structured Analysis

- Weekly...
 - Department Chairs
 - Associate Dean for Graduate Studies and Research
 - *VP for Clinical Affairs*
 - *President*
- Monthly...
 - Dean's Council
 - Clinical Education Council
 - *Open faculty curriculum track meetings*
- Quarterly...
 - Residency Director
 - Library Director
 - *Classes*
- Annually...
 - *President's Assessment*
 - *Student Council*
- As necessary...
 - Research Council
 - Director of CVRC
 - Director of CE
 - *Faculty Standing Committees*
 - *Class Officers*

Priorities for 2014

- Academic Programs – Professional Degree Program
 - Update to Clinical Education Competencies and Attributes Statement
 - Redefined Core Clinical Experiences
 - Competency statements
 - Link to student assessment – new clinical grading rubrics
 - Point system for externships, clinical portfolios
 - Define Advanced Clinical Experiences
 - *Chair of Clinical Education, CEC*
 - Evaluation of didactic tracks
 - Assessment of Lecture and lab contact hours
 - Preparation for increased student enrollment
 - Third year integration exam
 - Assessing EBP, integrated critical thinking, clinical preparation
 - Development of new learning technologies
 - *Curriculum reviews by chairs and track coordinators, Curriculum Committee, Student Evaluations, Curriculum Track meetings*

Priorities for 2014

- Academic Programs – Professional Degree Program
 - Revision of course and instructor evaluations
 - Questions and format
 - Effective communication and student engagement
 - *Chairs and FEC*
 - Implementation of Electives requirement
 - advanced learning, EBM, Critical thinking
 - *Chairs, Curriculum Committee*
 - Plan Accelerated/Advanced Standing and International Programs
 - *Chairs, Curriculum Track Meetings, ad hoc working group, Curriculum Committee*
 - Develop Interprofessional Education Programs
 - Didactic and clinical IPE curriculum
 - *Chairs, Curriculum Track Meetings, ad hoc working group, Curriculum Committee*

Priorities for 2014

- Academic Programs – Graduate Programs
 - Revisions to OD/MS program
 - Admission, Matching, Requirements and Implementation
 - *Associate Dean of Graduate Programs and Research, Graduate Faculty*
 - Revisions to OD/PhD programs
 - Implementation
 - *Associate Dean of Graduate Programs and Research, Graduate Faculty*
 - Fellowship-MS Fellowship-PhD in Clinical and Translational Research?
 - *Associate Dean of Graduate Programs and Research, Director of CVRC*
 - Joint Residency-MS and Residency-PhD programs?
 - *Residency Director, Associate Dean of Graduate Programs and Research, Director of CVRC*

Priorities for 2014

- Faculty
 - Faculty Supervision, Evaluation, and Development
 - *Chairs, Chiefs, VP for Clinical Affairs*
 - Recruitment for open positions
 - Statistician
 - Ocular Physiology, cell/molecular biology
 - Clinical faculty positions
 - *Department Chairs, Search Committees, VP for Clinical Affairs, Associate Dean for Graduate Studies and Research*
 - Clinical research faculty
 - *Director of CVRC, Associate Dean for Graduate Studies and Research*
- Research Growth
 - CVRC
 - Accreditation for human subjects program
 - Policies, procedures and compliance
 - *Director of CVRC, Associate Dean for Graduate Studies and Research*

Priorities for 2014

- Continuing Professional Education
 - More webinars, synchronous and asynchronous
 - Live programs including international sites
- Library Resources
 - Reassessing metrics
 - Usage statistics
 - Reaching alumni, adjuncts, and external communities