



# Foundational Support

Institutional Research and Planning Committee Presentation

March 5, 2019

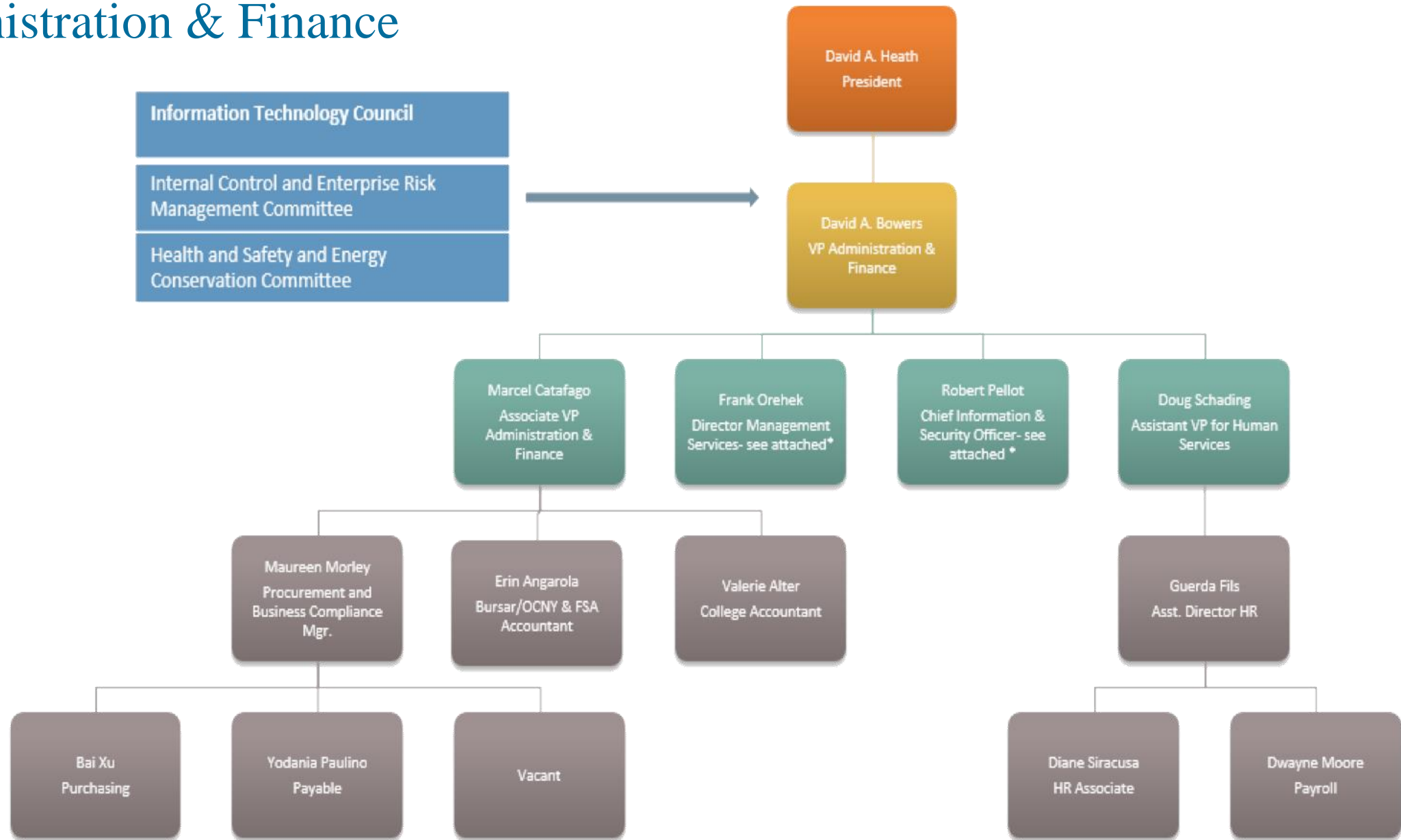
Office of Administration & Finance

## 2018-23 Strategic Plan Goal 9:

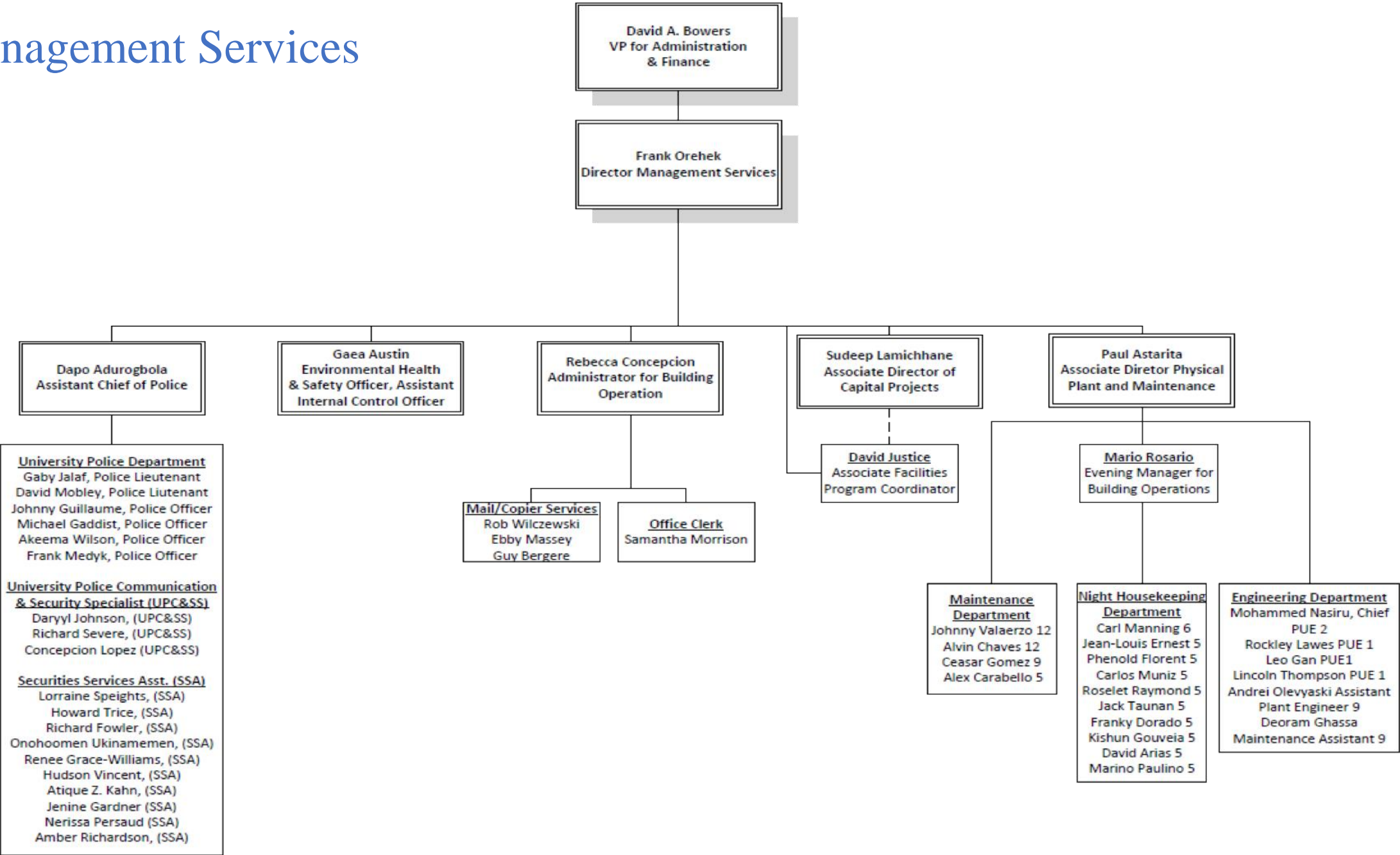
- Provide the financial foundation, administrative support and environment to achieve the College's mission.



# Administration & Finance



# Management Services



# Office of Information Technology

VICE PRESIDENT  
ADMINISTRATION AND  
FINANCE  
DAVID BOWERS

CHIEF INFORMATION  
OFFICER  
ROBERT PELLOT

ADMIN ASSISTANT/  
IT OFFICE MANAGER  
MICHAEL LINNARTZ

DIRECTOR  
EDUCATIONAL  
TECHNOLOGY SERVICES  
FIONA DHRIMAJ

DIRECTOR  
ENTERPRISE SYSTEMS &  
NETWORKING  
JORGE VILLON

A/V SPECIALIST  
LUGI AFFORTUNATO

PROGRAMMER  
ANALYST  
SIHUA CHENG

SR. TECHNOLOGY  
SUPPORT SPECIALIST  
WAYNE CHEN

CLINICAL SYSTEMS  
ADMINISTRATOR  
KARINE GRIGORYEVA

MEDIA SPECIALIST/  
SYSTEMS SUPPORT  
LOUIE BACOSA

WEB SPECIALIST  
VACANT

TECHNOLOGY  
SUPPORT SPECIALIST  
FERNANDO ARIAS

NETWORK/SYSTEMS  
SPECIALIST  
CARLOS PANORA

CLINICAL SYSTEMS  
SPECIALIST  
JULIE CASTILLO



# Foundational Support

- Business Office (6 FTE): Provides budget preparation and oversight in addition to procurement, accounting, bursar and payables services.
- Human Resources (4 FTE): Active in regulatory compliance as well as personnel, benefits and payroll matters necessary to the on-going operations of the organization.
- Information Technology (13 FTE): Major challenge is keeping up with both network and educational technology with limited available resources. A major and growing additional responsibility is information security.
- Facilities and Public Safety (49 FTE): Functioning physical infrastructure and security are essential foundational components.



# Foundational Support

- Implementation Strategies \*
- Acquire adequate financial, physical and human resources
- Potential Challenges
- Maintain adequate financial, physical and human resources

\* *Our budgeting process is structured to directly support our strategic plan.*



# Foundational Support

- *State tax collections for the month of January were \$2.3 billion below the Division of Budget's (DOB) initial Executive Budget projections. DOB has reduced estimates of tax receipts for the current and next fiscal years by \$5.7 billion since release of the November update of the Financial Plan.*
- ***“As lawmakers craft next year’s state budget, they are negotiating under the threat of slower economic growth, volatile financial markets and continuing revenue uncertainty,” said DiNapoli. “Decisions on the new budget demand an exceptionally high degree of caution, and I encourage the Governor and Legislature to bolster the state’s rainy day funds to better prepare for future fiscal challenges.”***

State Comptroller Thomas P. DiNapoli, February 2019





# Goal 9 Objectives

- Ensure healthy mix of revenue and funding sources
- Invest in infrastructure, including the following priorities to be completed by 2023:
  - Complete renovation of two of the four floors devoted to UEC patient care
  - Buildout of the facilities needed for the College's new translational research center
- Produce, analyze and act on performance data
- Encourage strategic and data-driven decision making, as well as transparency and accountability
- Improve financial performance through increased non-taxpayer originated revenues and responsible spending using mission driven strategies
- Expand philanthropic and development efforts to increase support for the institution with an initial focus on:
  - Student scholarships
  - Clinic renovation
  - Faculty chairs and faculty development programs
  - Development of a translational research center
  - Care for underserved populations in our community
- Identify new and advance existing relationships with industry leaders through meaningful volunteer opportunities, partnerships, marketing and financial support
- Increase positive visibility and media recognition in tri-state marketplace



# Foundational Support

- Revenue: Projected increases, but moderated by full enrollment and leveling off of tuition increases. Clinical income is a major source. Other sources like research, OCNYS support and facility usage fees are steady but not easily or quickly increased. New sources should also be considered, but in the context of their return on investment.
- Expense: Must remain conscious of spending; however, some expenses are hard to control, such as UUP increases (5 year total = \$10.7 M) or utilities (2017-18 = \$1.175 M; 2018-19 = \$1.3 M). Program growth, especially when technology intensive, puts pressure on spending control.
- Balances: Projected to grow and are vitally needed in an “all funds” budget (absorbed mandatory cost increases; front funded pediatric unit project). Maintain the “security” balance; spend the “opportunity” balance on strategic priorities. SUNY also requires campuses to hold cash reserves.
- Capital: Annual spending has averaged ~\$5 M per year. Capital comes through SUCF grants and by formula. We do well in getting projects funded by grants. Formula allocation would not sufficiently fund large projects on a small campus, for example, Optometry formula allocation in 2019-20 is \$927 K (used for less costly improvements with high impact as well as critical maintenance). Project pipeline is full moving forward.



# Foundational Support

- **Compliance:**

- Internal Control and Enterprise Risk Management Committee
- Added time and effort of SUNY Counsel
- Annual OSC and DOB compliance certifications



# Foundational Support

- Questions/Comments

