

# About TurningPoint Cloud

This chapter covers the following topics:

## **Technical Requirements**

## Technical Requirements

TurningPoint Cloud is designed to function on most computers; however, there are some basic hardware and software requirements.

### Requirements for Software and Hardware

The following software and hardware specifications are required before using TurningPoint Cloud:

- Mac® OS X v10.9 or higher
- Microsoft Office® 2011 or 2016 (for PowerPoint® Polling and viewing exported reports in Excel®)
- Intel processor 2 GHz or higher
- 2 GB RAM
- 500 MB hard disk space
- Standard USB 2.0 port (for USB-based hardware devices)
- Ethernet or 802.11 compatible wireless network card
- An active internet connection (for initial Turning Account authentication, ResponseWare usage (if applicable) and use of Cloud features)
- Java™ 7 Runtime Environment or later (for importing RTF, DOC, DOCX and QTI documents and exporting reports to Excel and CSV)

### Compatible Devices

The following devices are compatible with TurningPoint Cloud:

#### **IMPORTANT**

The latest firmware versions for ResponseCard XR, NXT and QT are required for communication between the devices and TurningPoint Cloud.

- ResponseCard IR, RF and RF LCD (PowerPoint Polling and Anywhere Polling)
- ResponseCard XR and NXT (PowerPoint Polling, Anywhere Polling and Self-Paced Polling)
- QT Device (PowerPoint Polling, Anywhere Polling and Self-Paced Polling)
- Pulse (PowerPoint Polling and Anywhere Polling)
- ResponseWare (PowerPoint Polling and Anywhere Polling)
- PresenterCard (PowerPoint Polling and Anywhere Polling)
- PresenterWare (PowerPoint Polling and Anywhere Polling)

# Download and Setup

TurningPoint Cloud can be downloaded via Turning Account. After it has been downloaded, the file will need to be unzipped or installed depending on the version that was downloaded.

This section covers the following topics:

- Creating a Turning Account***
- Downloading TurningPoint Cloud***
- Setting Up an Offline Password***

## *Creating a Turning Account*

---

A Turning Account is a unique identifier that is used to tie together all software accounts and response devices. A Turning Account is required for use with Turning Technologies products.

- 1 Go to <https://account.turningtechnologies.com/>.
- 2 Enter your **school or organization email address** and click **Create**.

### **IMPORTANT**

If your email address belongs to a defined organization in Turning Account, the following message is displayed:

Your Turning Account needs to be connected to your school's Learning Management System to track your participation. Sign-in to your LMS and click on the Turning Account Registration link under any course that uses clickers.

- 3 Check your email and click the link to verify your Turning Account.
- 4 Enter all **required fields** as noted by the asterisks.
- 5 Enter and confirm your **password** in the fields provided.
- 6 Select the box labeled *By checking this, you agree to comply with the End-User License Agreement and Terms of Use*.
- 7 Click **Finish**.
- 8 If you have a **license code** and/or **device ID** enter them in the appropriate box and click **Redeem** and/or **Register**.
- 9 Click **Finish**.  
The Turning Account Dashboard is displayed.

## *Downloading TurningPoint Cloud*

---

### Before You Begin

Please verify that your computer meets the **Technical Requirements** on page 1 before downloading TurningPoint Cloud.

- 1 Go to <https://account.turningtechnologies.com> and sign in to your Turning Account.
- 2 Select **Downloads** from the left menu.

- 3 Below TurningPoint Cloud, select the Mac **No Install** version.

**NOTE**

The install version requires a complete installation onto the local computer and requires administrator rights to complete the installation.

The no-install version is downloaded as a zipped file that can be placed in any location, such as your desktop, a folder or flash drive. The file must be unzipped and you access the software by double-clicking the TurningPoint Cloud file in the folder.

- 4 **Save** the file to a specified location.

## Setting Up an Offline Password

---

To use TurningPoint Cloud when you are not connected to the internet, you must set up an offline password.

**NOTE**


Setting up an offline password is not available to Single Sign-On users.

**IMPORTANT**

When you are signed in to TurningPoint Cloud offline, online features (ResponseWare and Integrations) will not be available.

### Before You Begin

You must be connected to the internet to set up your offline password.

- 1 Open TurningPoint Cloud and sign in to your Turning Account.
- 2 Click  on the bottom right corner of the Dashboard.  
The *Preferences* window opens.
- 3 Click **Set Password**.
- 4 Enter and confirm your **offline password** in the boxes provided.

**NOTE**

Your password must contain a minimum of eight characters including one upper case, one lower case and one number.

- 5 Click **Set**.
- 6 Click **Close** to return to the TurningPoint Cloud Dashboard.

# Device Setup

Participants interact with TurningPoint Cloud through response devices (clickers) that communicate through a receiver or the internet with web enabled devices (ResponseWare). A list of the compatible devices can be found in **Compatible Devices** on page 1.

This section provides instructions for:

- Connecting Receivers and ResponseCards**
- Connecting to ResponseWare (if applicable)**

## Connecting Receivers and ResponseCards

By default the receiver and ResponseCards are set to Channel 41. If you are the only TurningPoint Cloud user within a 200ft radius on Channel 41, simply plug in the receiver and begin polling. If another user is on Channel 41, you must use a different channel to avoid interference. ResponseCards must be set to the same channel as the receiver.

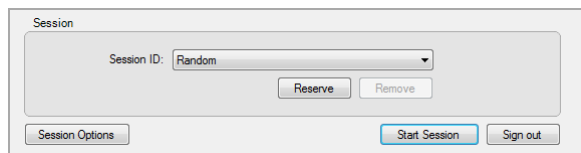
To change the channel please refer to <http://help.turningtechnologies.com/Hardware/#Hardware/Clickers/Clickers.htm>

## Connecting to ResponseWare (if applicable)

ResponseWare must be enabled for participants to use ResponseWare as a response device.

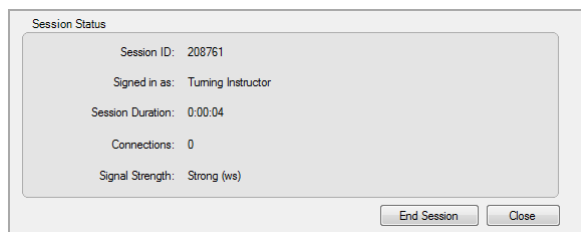
- 1 Open TurningPoint Cloud and sign in to your Turning Account.
- 2 Click **Click to Connect** in the upper right corner of the TurningPoint Cloud Dashboard.

The *ResponseWare Session* window opens.



- 3 Click **Start Session**.

The *ResponseWare Session Status* window opens.



- 4 Communicate the *ResponseWare Session ID* to your participants.
- 5 Click **Close** to return the TurningPoint Cloud Dashboard.